

INTERLINK TOWER



Interlink Tower

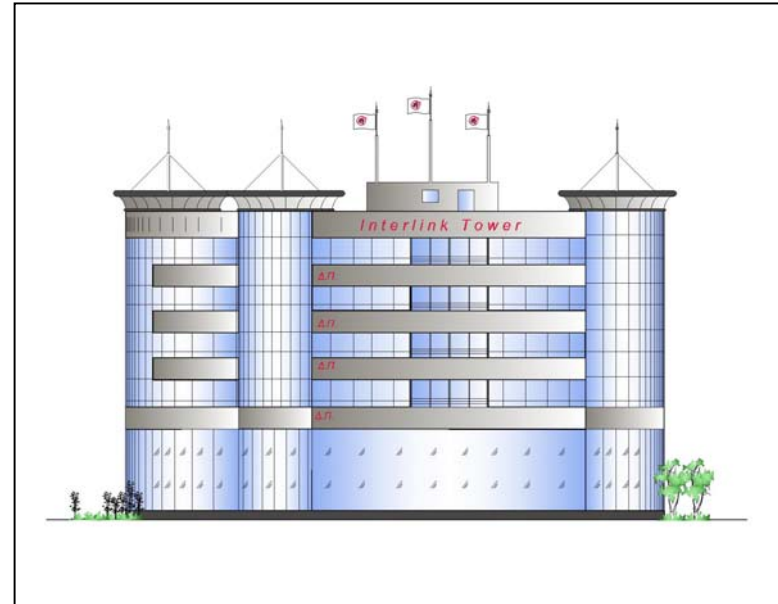
Occupying a prominent corner site, "Interlink Tower" presents a major addition to the area, providing high exposure to its occupants. Designed and constructed to the highest specifications, this class "A" office building consists of a 5-story office tower, a retail showroom / shop area on the ground floor with mezzanine, and a parking facility under ground.

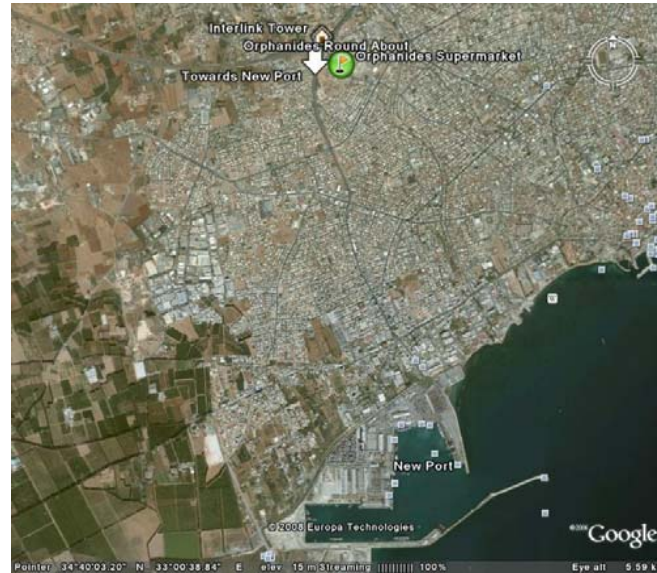
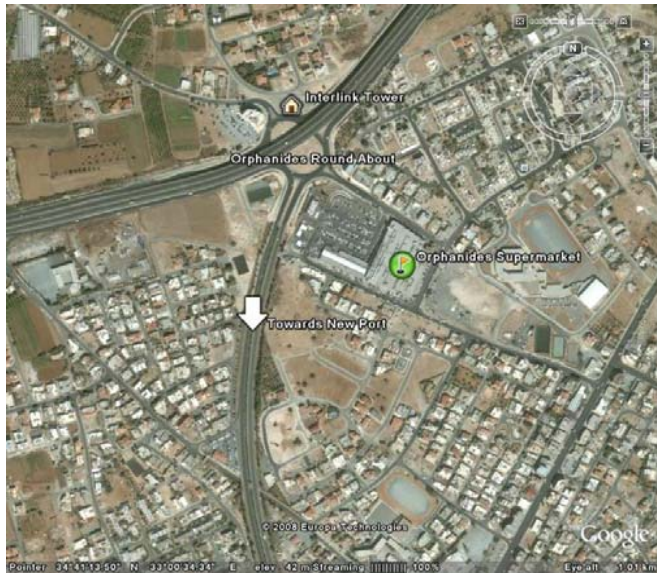
The building's modern design compliments this rapidly developing area and is conveniently located, just a 5 minutes drive to

Limassol's Commercial Port, Hospital and other everyday amenities, including financial institutions and public organizations. It also offers immediate access to Limassol's most efficient infrastructure and highway, leading to all major towns on the island.

Keeping in mind the shifting needs of corporate organizations, our architects have spent a great deal of time and effort to design spaces that are efficient and functional in their use. The ground floor with mezzanine can be utilized as either retail showrooms, shops or office space, suitable for organizations that need direct exposure to the public. Also, the five floors of open plan office space can be easily modified to satisfy your particular corporate needs, producing a work environment that will inspire and motivate. The public and under ground parking are able to sufficiently accommodate the needs of both clients and employees. Complying with the latest European building regulations, using only the best quality materials and ensuring the highest standards of workmanship, "Interlink Tower" is an investment opportunity not to be missed.

Completion of the project: June 2010





Free Call
8000 7000

MNS Interlink Construction & Development Ltd

Agias Zonis & Thesallonikis Corner,
Nicolaou Pentadromos Center, Block B,
Office 902, 53422, 3302 Limassol, Cyprus